

CONNECTIONS

CORNHUSKER PUBLIC POWER DISTRICT • FEBRUARY 2025



Light up your night with LEDs

Almost everyone has a light or a number of lights they rely on to nurse their night owl tendencies. Why wouldn't you want efficiency, quality and the most overall value from those essential fixtures? Here are a few of the most common, including opportunities for their improvement:

Ceiling fixtures

In the 1950's, almost all residential ceiling lights required incandescent bulbs. About 90% of the electricity incandescent bulbs consumed produced heat rather than light. Today, homeowners can select light-emitting diode (LED) replacement bulbs requiring six to seven times less electricity to produce the same amount of light while lasting up to 12 times longer.

Another option consumers have is to install fully dimmable LED replacement bulbs and the appropriate dimmer switch. By doing so, users can adjust light levels to their desired effect. For even greater energy efficiency and longevity, consider replacing an old fixture with a solid-state LED fixture. Many are also fully dimmable. Solid-state fixtures have embedded LEDs so bulb replacement is no longer necessary.

Plug-in lamps

It is common to leave a wall or table lamp on for someone needing to pass through an area of the home after everyone else has gone to bed. In 1902, bulbs with two carbon

filaments were created to allow for adjustable lighting levels. Shortly thereafter, the manufacturing of lamps with multi-level switches allowed homeowners to select multiple illumination levels. This reduced the amount of electricity used when minimal levels of illumination were appropriate. With a simple twist of the switch, full lighting levels could be restored. As with other socket-type fixtures, improving efficiency is as simple as replacing older incandescent bulbs with three-way LED replacement lamps.

Outdoor sconces and pathway lights

Especially as we enter the winter season and our nights become longer, exterior lighting becomes a matter of maintaining safety. Sidewalks can become snow or ice-covered, which creates slipping hazards. While converting these to LED is an easy option to improve efficiency, when was the last time you cleaned these fixtures? Over the past forty years, The Illuminating Engineering Society has commissioned several luminaire dirt depreciation studies to find that outdoor fixtures can lose 11 to 29 percent of their light output due to outdoor environments. A simple way to reestablish their lighting levels is to add "fixture" cleaning to your fall routine. After a season of dusty winds, lawn mowing and plants pollinating, this is the perfect time to restore their functionality.

Continued on page 2-D: Night lights

ENERGYWISESM

2025 incentive programs



Residential



HEAT PUMPS

Air-source, mini-split or geothermal
Up to \$3,300



HEAT PUMP WATER HEATERS

Air source or water/ground heat
pump water heaters **Up to \$650**



SMART THERMOSTATS

Up to \$100 on a Wi-Fi
enabled smart thermostat



COOLING SYSTEM TUNE-UP

\$30 when customers tune-up
their cooling system



ATTIC INSULATION

Add 6" insulation to existing
(less than 6") attic insulation
30¢ sq/ft rebate available



INDUCTION COOKTOP/STOVE

20% off purchase price
of a 30" minimum width
induction cooktop or range

Ag/Business



PRESCRIPTIVE AG

Prescriptive irrigation (**\$500**), corner
pivot VFDs (**\$18/hp**), irrigation moisture
sensors (**\$300**), automated grain aera-
tion (**\$.011 per bushel of bin capacity**)



LIGHTING

Prescriptive or custom upgrades
Up to \$80 per fixture

Electric Vehicle Charging



LAWN & GARDEN

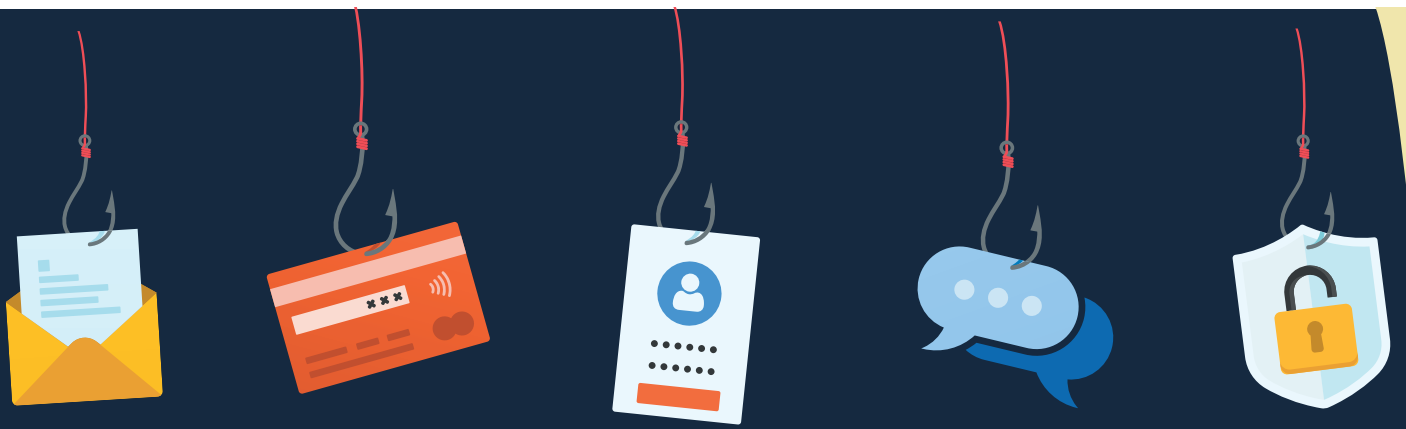
20% off purchase price of all
electric lawn and garden tools



EV CHARGING STATIONS

Commercial & residential incentives
available for installing a charging
station or pre-wiring a home

*For full list of program guidelines visit: cornhusker-power.com



Utility scams in this age of AI: How to spot and avoid fraud

Someone calls claiming to be from Cornhusker Public Power District. They say your service will be cut off if you don't pay them immediately. Cornhusker Public Power District does not do this. But scammers want to scare you into paying before you have time to confirm what they're telling you. And scammers are now using Artificial Intelligence (AI) to craft frauds, making it difficult for consumers to detect. Learn how to protect yourself.

Beware of these common scam tactics

- Disconnection threats: Scammers claim your service will be cut off without immediate payment.
- Caller ID spoofing: Fraudsters use software to make their calls appear legitimate.
- Overpayment claims: They may say you've overpaid and ask for personal or banking information to issue a refund.
- Smishing: Scammers send fake text messages appearing to come from Cornhusker Public Power District.
- Phishing attempts: Beware of emails that look like bills; always verify the sender's email before clicking links.

If you have any doubt about the status of your electric service, call Cornhusker Public Power District at 402 564 2821.

Watch for the following red flags

- High-pressure tactics demanding urgent action.
- Unusual payment method requests (wire transfer, gift cards, reloadable cards or cryptocurrency).
- Poor grammar, misspellings and suspicious email addresses.

AI use enhances utility scams

By leveraging AI-powered techniques, utility scammers can create sophisticated and convincing frauds that are hard for consumers to recognize and avoid.

- AI helps scammers craft convincing emails appearing to be from Cornhusker Public Power District and include the use of company colors and logos.

- Scammers use AI to create realistic-looking company websites and are indistinguishable from legitimate ones.
- AI technology can clone the voices of company representatives, making phone scams convincing.
- AI analyzes victims' online presence and social media to create highly personalized spam related to CPPD's services.
- Scammers create geographically targeted online ads appearing when users search for keywords related to their energy bills.
- Scammers use AI to launch large-scale utility scam campaigns quickly and efficiently.

According to Kathy Stokes, AARP Director of Fraud Prevention Programs, "the ability of AI to improve and scale scam tactics is the equivalent of the Industrial Revolution for fraud criminals."

Protect yourself

- Take your time: Don't rush into payments or action.
- Verify any communication by calling CPPD directly at 402 564 2821.
- Never share personal information. Legitimate companies will not ask for sensitive details over the phone.
- If someone claims to be a utility worker, request official identification.

If you suspect a scam, report it to Cornhusker Public Power District and the FTC at [ReportFraud.ftc.gov](https://www.ftc.gov/report-fraud).

Remember, Cornhusker Public Power District will provide multiple notices before disconnection and will not pressure you for immediate payment. If you are in doubt, call us to inquire about your account.

Learn more at:



Super Bowl Energy Savings

3 Easy ways to save if hosting a party

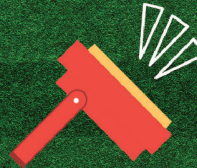
Have fun watching the Super Bowl
(and the commercials!) ⚡⚡⚡⚡⚡



Before guests arrive, lower the thermostat.
(extra people = additional warmth)



Cook with smaller counter top appliances to save energy



Use solar lights to light your porch and sidewalks.



Night lights, From Page 2-A

Plug-in lights

How easy is it to plug a small night light into an electric socket to provide a little extra illumination where you need it? Though they may only require between 2 and 7 watts of power, many operate continuously and do not switch off during the day. Over the course of a year, they can double the amount of energy needed to provide that small amount of extra safety and security. Instead, install an LED night light with a photosensor switch. Most require one watt or less of power to operate and automatically switch “on” or “off” depending on the amount of light from other sources.

Source: Cory Fuehrer, NPPD Energy Efficiency Program Manager

Featured Employee



Austin Urkoski

Lead Line Technician

7 Years



CEO/GM
Clay Gibbs

BOARD OF DIRECTORS

Glen Pfeifer, Lindsay
President

Jon Gehring, Platte Center
Vice-President

Mark Palmer, St. Edward
Secretary

Russell Yosten, Clarkson
Treasurer

Andy Daniels, Columbus

Lawrence Franzen, Leigh

Galen Frenzen, Fullerton

Robert Gray, Jr., Albion

William Robinson, Cedar Rapids

Milan Siefken, Columbus

Board meetings held the third Monday of each month at 9 AM. Agenda available during business hours.

EDITOR

Jessica Kurpgewit

OFFICE HOURS

Monday-Friday 7:30 a.m.- 4:30 p.m.
Closed weekends and holidays

SERVICE CENTERS

ALBION, NE AND FULLERTON, NE

cornhusker-power.com

CORNHUSKER
PUBLIC POWER DISTRICT
PO BOX 9 COLUMBUS NE 68602

OUTAGE CALLS 24 HOURS
(402) 564 2821

SERVING IN PLATTE, COLFAX,
BOONE, NANCE, GREELEY AND
WHEELER COUNTIES