

# CONNECTIONS

CORNHUSKER PUBLIC POWER DISTRICT • MARCH 2024

## BENEFITS OF TREE TRIMMING



- ✓ Improves service reliability
- ✓ Speeds up restoration time
- ✓ Keeps crews & communities safe



Crew Foreman Jay Wemhoff (left) and Groundsman Dustin Kula (right) trim a tree.

### Clearing the path to reliability

We love trees. They beautify our landscape, provide shade and are an essential part of nature. But we also know our customers depend on us to deliver reliable power to their homes and businesses. Cornhusker Public Power District strives to balance maintaining the beautiful surroundings we all cherish while ensuring safe and reliable electricity. You might not realize it, but there are several benefits to regular tree trimming.

#### Safety

Working near power lines can be dangerous, and we care about safety for you and our line technicians. For example, if trees are touching power lines in our customers' yards, they can pose a grave danger to families. If children can reach those trees, they can potentially climb into a danger zone. Electricity can arc, or jump, from a power line to a nearby conductor such as a tree.

Any tree or branch falling across a power line creates a potentially dangerous situation. A proactive approach lessens the chances of fallen trees during severe weather events making it more complicated and dangerous for line technicians to restore power.

#### Reliability

Keeping power lines clear of overgrown vegetation improves service reliability. After all, we've seen the whims of Mother Nature during severe weather events with fallen tree limbs taking down power lines and utility poles. This is why you sometimes see Cornhusker Public Power District crews or contractors trimming trees near power lines. Our Right-of-Way (ROW) crew has been trained and certified based on the latest industry standards.

Scheduled trimming throughout the year keeps lines clear from overgrown or dead limbs that are likely to fall, and we are better able to prepare for severe weather events. It's more cost-effective to undertake preventative maintenance than it is to make repairs after the fact.

#### Affordability

Cornhusker Public Power District always strives to keep costs down for our customers. If trees and other vegetation are left unchecked, they can become overgrown and expensive to correct. A strategic vegetation management program helps keep costs down for everyone.

Continued on page 12-B: Tree Trimming

# YOUTH ENERGY

## Leadership Camp



### Want to attend Youth Energy Camp?

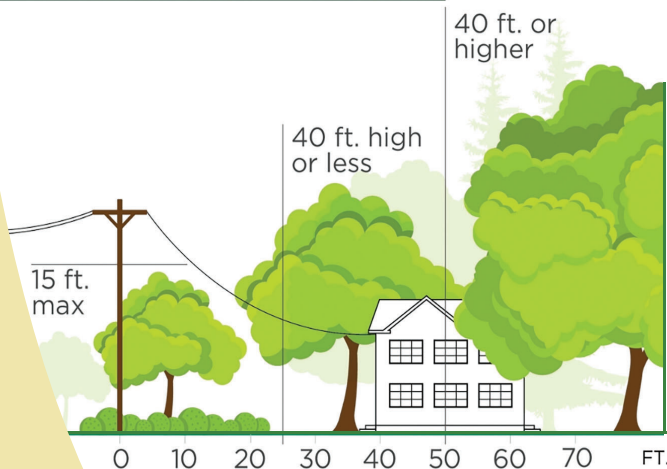
- » Cornhusker Public Power District selects up to 6 teens to attend camp each year. Interested students will be asked to submit an essay.
- » Camp is July 22 - 26, 2024, at Camp Comeca in Cozad, NE.
- » You must be a 9<sup>th</sup>, 10<sup>th</sup>, or 11<sup>th</sup> grader...And your home must be served by CPPD!
- » **Interested students apply online at [cornhusker-power.com](http://cornhusker-power.com).** Once registered, a packet of information will be sent to the student with essay instructions. Essays are due April 12.
- » If more than six students submit essays, a contest will be held (at a later date) to determine the six scholarship recipients.



### Why go to Energy Camp?

- » Learn about public power in Nebraska and debate proposed issues.
- » Tour two Nebraska Power Plants.
- » Have a chance to be one of three students to win a trip to Washington D.C.
- » Make friends with nearly 70 teens from Nebraska and Wyoming.
- » Participate in activities: sports, canoeing, dance, and banquet.

## PLANT TREES IN THE RIGHT PLACE.



### Continued from page 12-A: Tree Trimming

When it comes to vegetation management, there are ways you can help too. When planting new trees, make sure they're planted a safe distance from overhead power lines. Medium-height trees (40 ft. or smaller) should be planted at least 25 ft. from power lines. Taller trees (over 40 ft.) should be planted at least 50 ft. from power lines. You can also practice safe planting near pad-mounted transformers. Plant shrubs at least 10 ft. from the transformer door and 4 ft. from the sides. If your neighborhood has underground lines, remember to contact 811 before you begin any project requiring digging.

Additionally, if you spot an overgrown tree or branch close to overhead lines, please call us at 402 564 2821.

We have deep roots in our community, and we love our beautiful surroundings. It takes a balanced approach, and our vegetation management program is a crucial tool in ensuring service reliability.

Source: NRECA

# 2024 ENERGYWISE<sup>SM</sup> incentive programs

## Residential Incentives

### Heat Pump Water Heater

**Incentive amounts:**.....\$400 - \$650

Incentives are available for air-source heat pump water heaters and ground-source heat pump water heaters.

### High-Efficiency Heat Pumps

**Incentive amounts:**.....\$400 - \$3,300

Install an air-source, ductless mini-split or geothermal heat pump and receive an incentive on qualifying systems. Minimum qualifications are: 16 SEER, 12.5 EER, 8.5 HSPF.

### Cooling System Tune-up

**Incentive amount:**.....\$30

Available to homeowners who have their cooling system (heat pump or air conditioner) tuned up by an HVAC contractor.

### Smart Thermostat

**Incentive amounts:**.....\$25 - \$100

Incentive available to customers who install a Wi-Fi enabled ENERGYSTAR-certified smart thermostat with their HVAC system.

### Residential Attic Insulation

**Incentive amount:**.....\$.30/sq. ft.

Available to all residential homeowners who add 6" additional attic insulation to 6" or less existing insulation. Maximum incentive of \$600 per existing residential dwelling.

### Induction Cooking

**Incentive amount:**.....20%

An incentive of 20% off the purchase price is available to customers who purchase a new induction cooktop stove. Must be 30" minimum width of cooktop or range.

### Lawn & Garden

**Incentive amount:**.....20%

A 20% incentive is available to customers who purchase a new battery-powered or corded electric lawn mower as well as battery powered chain saws, tillers and snow blowers.

### Electric Vehicle Charging Station & Pre-wiring

**Incentive amounts:**.....\$400 - \$600

Available to all residential homeowners who install a ChargePoint 32 Amp, WIFI enabled charging station at their home. Incentives are also available to all residential homeowners who pre-wire their home for the future installation of an EV charging station.

## Agricultural Incentives

### Prescriptive Lighting

**Incentive amounts:**.....\$2 - \$80 per fixture

Available to customers who upgrade to qualified LED efficient lighting in a shop or warehouse.

### Center Pivot/Linear Outlet Component Replacement

**Incentive amount:**.....\$500

Available to irrigators who replace all existing outlet components on an all-electric pumping system that is at least five years old. Systems must be four sections in length or longer.

### Irrigation Moisture Sensor

**Incentive amount:**.....\$300

Incentive is available to irrigators who install an irrigation moisture sensor incorporated with an irrigation management program or software. Water must be supplied by an all-electric pumping system.

### Corner Pivot Variable Frequency Drive

**Incentive amount:**.....\$18/horsepower

Available to irrigators who install a variable frequency drive to their corner pivot system.

### Irrigation Pump Efficiency Test

**Incentive amount:**.....\$350

Incentives are available for having a professional efficiency test conducted on electric irrigation pumps.

### Automated Grain Aeration

**Incentive amount:**.....\$0.11/bushel

Available to farmers who install temperature sensors that extend through the grain profile and automatically control aeration fans.

### Hog Heat Mat

**Incentive amount:**.....\$40 - \$80 per mat

Incentives are available when farmers purchase automatic temperature-controlled mats for their swine farrowing units.



For a full list of program guidelines and applications, visit [cornhusker-power.com](http://cornhusker-power.com)



## COLFAX COUNTY Goodwill Fund Trustee needed

The Goodwill Fund Trustees are looking for a person from Colfax County to serve as a representative on the Goodwill Fund Trustee board. Two 3-year terms expired for current trustee Randy Hrouda. Cornhusker Public Power District must serve the applicant's home. Trustees meet quarterly in the evening. The applicant must be available to present checks during the day to recipients of the Goodwill Fund. Contact Jessica at 402 564 2821 for an application.



## 2024 Goodwill Fund 1st Quarter Results

*Thank you to all customers who round-up their bill to the next highest dollar:*

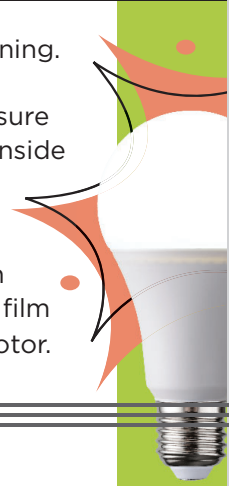
Amount	Organization/Agency	Purpose
\$750	Belgrade Volunteer Fire Department	Scuba air packs
\$100	Cedar Rapids Blood Mobile	Food
\$200	Boy Scouts of America	Recruitment materials
\$750	Columbus Cancer Care	Van
\$300	St. John Neumann School	Wi-fi firewall
\$750	Duncan Volunteer Fire Department	Pagers
\$300	Howells-Dodge School	Home book bags
\$500	Monroe Veterans Wall Committee	Concrete for Veterans Wall
\$500	American Legion Post 47	Veterans Memorial
\$300	Baby Shower in a Box	Baby essential boxes
\$450	St. Edward Fire & Rescue	Rechargeable Flashlights
\$75 each	Post Prom: Boone Central HS, Columbus HS, Clarkson/Leigh, Columbus Scotus, Lakeview HS, Lindsay, & Humphrey HS	Prizes

Next applications are due on April 19, 2024. Apply at [cornhusker-power.com](http://cornhusker-power.com).

## ENERGY EFFICIENCY TIP OF THE MONTH

Lengthen the life of your clothes dryer with regular cleaning. Clean the lint filter after every load, which improves air circulation and safety. Check the lint trap opening to ensure it's clean. Use a vacuum to remove any lint that's fallen inside the opening.

If you use dryer sheets, check the lint filter for residue buildup. Remove any residue with hot water and a nylon brush or toothbrush. Over time, dryer sheets can leave a film on the filter, which can affect the performance of the motor.



CEO/GM  
Clay Gibbs

### BOARD OF DIRECTORS

Glen Pfeifer, Lindsay  
President

Jon Gehring, Platte Center  
Vice-President

Mark Palmer, St. Edward  
Secretary

Russell Yosten, Clarkson  
Treasurer

Andy Daniels, Columbus

Lawrence Franzen, Leigh

Galen Frenzen, Fullerton

Robert Gray, Jr., Albion

William Robinson, Cedar Rapids

Milan Siefken, Columbus

Board meetings held the third Monday of each month at 9 AM. Agenda available during business hours.

### EDITOR

Jessica Kurpgewit

### OFFICE HOURS

Monday-Friday 7:30 a.m.- 4:30 p.m.  
Closed weekends and holidays

### SERVICE CENTERS

ALBION, NE AND FULLERTON, NE

[cornhusker-power.com](http://cornhusker-power.com)

CORNHUSKER  
PUBLIC POWER DISTRICT  
PO BOX 9 COLUMBUS NE 68602

OUTAGE CALLS 24 HOURS  
(402) 564 2821

SERVING IN PLATTE, COLFAX,  
BOONE, NANCE, GREELEY AND  
WHEELER COUNTIES